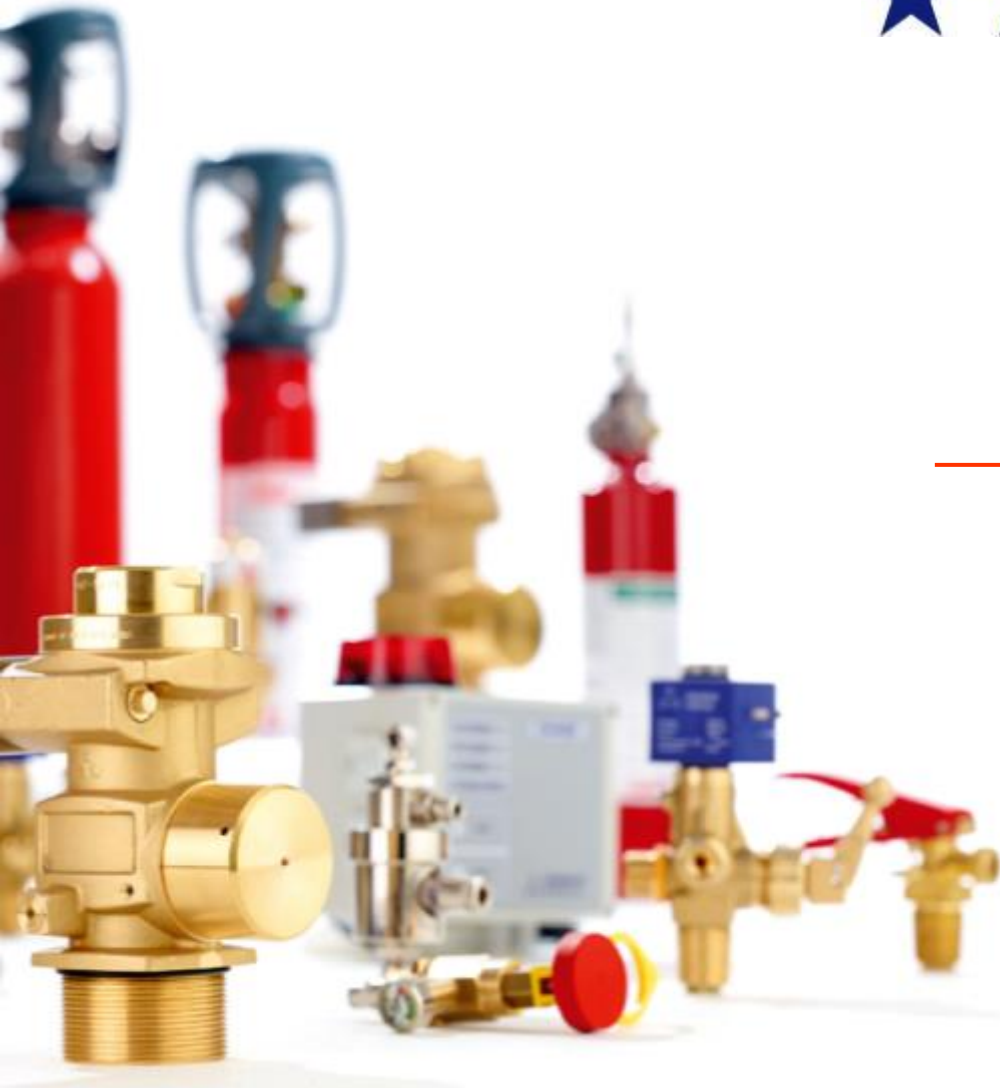




ROTAREX
FIRETEC

FIREDETEC





ROTAREX
FIRETEC
FIRETEC

FIREDETEC PRODUCT
TECHNOLOGY: DIRECT & INDIRECT



PROPERTIES – DIRECT SYSTEM (< 1m³)

- DETECTION TUBE : FIRE DETECTION & EXTINGUISHING AGENT DISCHARGE
- IDEAL APPLICATION: Small and hard to reach enclosures (< 1m³)
- BEST PRICE PERFORMANCE
- VERY EASY TO INSTALL



PROPERTIES – INDIRECT SYSTEM (< 9m³)

- DETECTION TUBE : FIRE DETECTION ONLY ←
- DISCHARGE THROUGH A SEPARATE DISCHARGE LINE ←
- MOST EFFECTIVE PERFORMANCE ←
- QUICKER DISCHARGE ←
- MANUAL ACTUATION POSSIBLE ←

Only indirect systems can be UL or FM approved



ROTAREX
FIRETEC
FIRETEC

FIREDETEC PRODUCT SYSTEM CONSTRUCTION

CYLINDER/VALVE ASSEMBLY

- Cylinder
- Valve
- Siphon Tube
- Mounting bracket
- Ball Valve



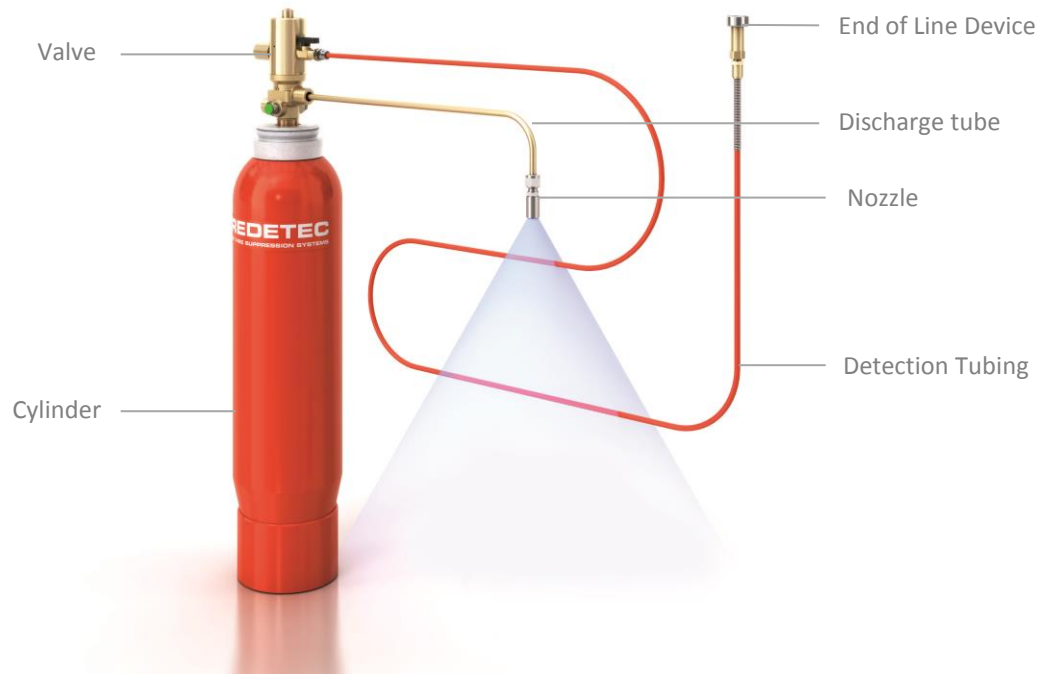
DETECTION SUB-SYSTEM

- Detection Tubing
- End of line device
- Mounting clips



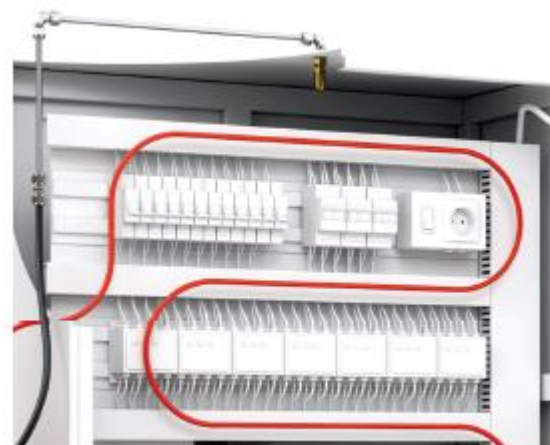
DISCHARGE SUB-SYSTEM

- Nozzle
- Discharge Tubing
- Fittings
- Flexible Hose
- Mounting clips



FIREDETEC TUBING SPECIFICITIES

- Dual-function: detects and suppresses (direct systems)
- Compact, flexible and reliable
 - Burst temperature: 110°C or 175°C
 - Linear pneumatic detection: no external power source
 - Can be installed anywhere – even in hard-to-reach places
- Advanced technology polymer construction:
 - Resistant to severe environments, UV, and extreme temperatures
- Originally developed by Rotarex



**ALL-PURPOSE
SENSOR TUBING**



**SPECIAL APPLICATION
SENSOR TUBING**



**SENSOR TUBING FOR
KITCHEN SYSTEMS**





ROTAREX
FIRETEC
FIBRETEC

FIREDETEC PRODUCT TUBING TECHNOLOGY

1

INSTALLS INSIDE EQUIPMENT CLOSER TO THE SOURCE.

- Compact and Flexible ←
- Installs almost anywhere ←
- Even in hard to reach spaces ←
- Just cm from critical circuitry and mechanics ←



2

QUICKLY DETECTS AND SUPPRESSES FIRES

- The tube is pressurized to 16 bar ←
- It bursts at 110° C or 175°C – at early sign of fire ←
- The drop in pressure instantly actuates the valve ←
- Extinguishing agent floods the compartment ←
- The fire is suppressed in just seconds ←





ROTAREX
FIRETEC
FIRETEC

FIREDETEC PRODUCT
CREATE YOUR OWN SYSTEM



CYLINDER VALVE
HFC-227



CYLINDER VALVE
NOVEC™ 1230



CYLINDER VALVE
CO₂



CYLINDER VALVE
ABC Dry chemical



CYLINDER VALVE
FireDETEC F/K



CYLINDER VALVE
FireDETEC TS55





ROTAREX
FIRETEC
FIRETEC

FIREDETEC PRODUCT ADVANTAGES

Efficiency

- Excellent value/price ratio
- Continuous linear detection
- Quick reaction time
- Works 24/7

High-quality & Reliability

- Certifications from both independent and governmental agencies
- No accidental discharge
- Ability to detection of leak
- Shock and vibration resistant

Flexibility

- Installation on almost every type of applications
- Installation even in hard to access spaces
- No external power source needed
- High & low pressure systems available

Easy installation & maintenance

- Quick installation
- Simple maintenance steps

Environment:

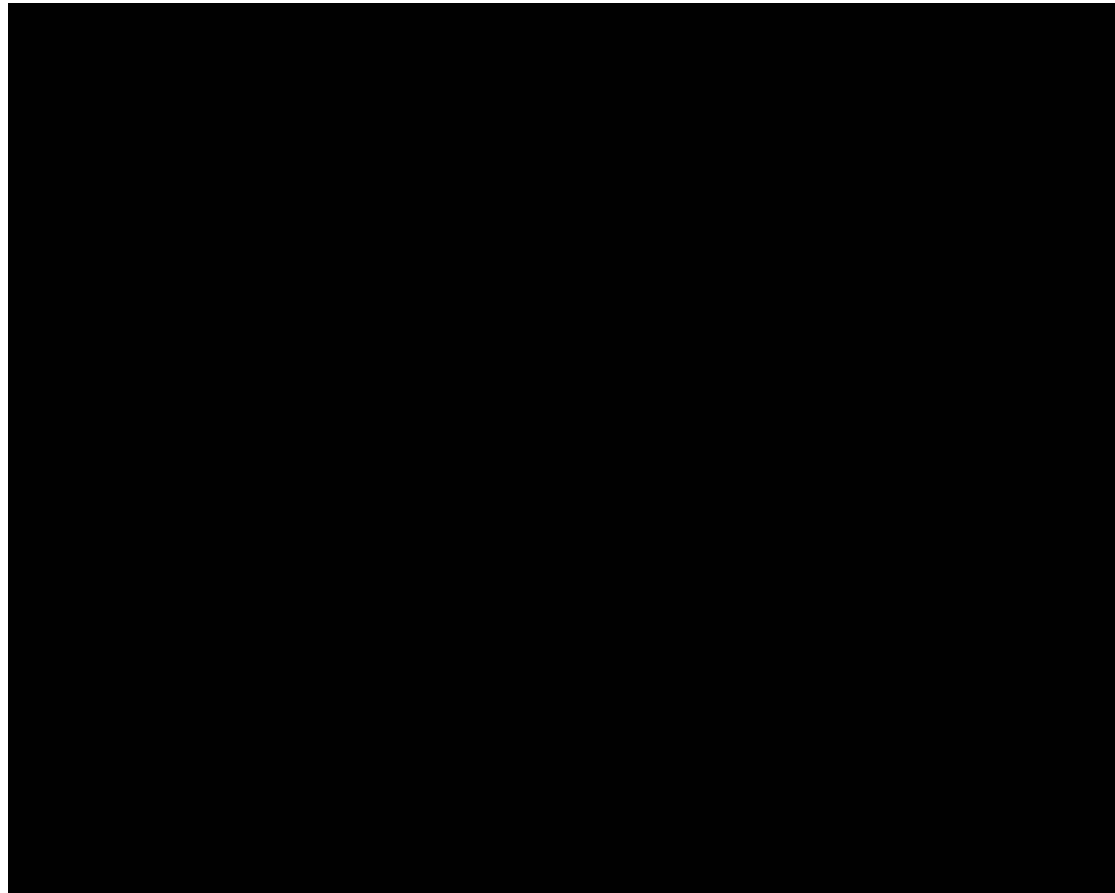
- Low environmental impact





ROTAREX
FIRETEC
FIBRETEC

FIREDETEC DEMONSTRATION





FIREDETEC PRODUCT MAIN MARKETS



HOSPITALS

Electrical Equipment
Laboratories
Emergency Generators
Elevators

PORTS AND SHIPPING TERMINALS

Reach stackers
Elevator Trucks
Mobile Cranes
Cargo Cranes



AIRPORTS

Server rooms
Radar and control tower equipment
Escalators and moving walkways
Baggage handling equipment ; de-icing trucks ; fueling trucks

MINES

Heavy equipment (Bulldozers ; front end loaders ; conveyor systems...)
Mobile equipment (Extraction machines ; drilling machines...)
Electrical panels



INDUSTRY (MACHINE SHOPS + FACTORY)

CNC Machines
EDM Machines
Electrical cabinets
Dust extractors

WINDMILLS

Control Cabinet
Hydraulic Station
Transformer
Braking system
Condenser



PUBLIC TRANSPORTS

Bus vehicle engine
Electrical cabinets in metro stations
Trains

PHARMACEUTICAL & ANALYTICAL LABS

Fume Hoods
Flammable liquid storage closets
Air filtration systems
Exhaust systems





FIREDETEC PRODUCT APPLICATIONS EXAMPLE

ELECTRICAL CABINET

Multiple causes of fire:

- Short-circuits, overloading or overheating of components
- Formation of intermittent arcs
- Incorrect installation
- Faulty equipment (electrical malfunction ; lifetime of equipment...)

Available extinguishing agent:

- CO₂
- HFC-227 / NOVEC

Certifications:

- FM / UL approval for DOT cylinders (HFC-227 / NOVEC)





FIREDETEC PRODUCT APPLICATIONS EXAMPLE

INDUSTRIAL MACHINERY

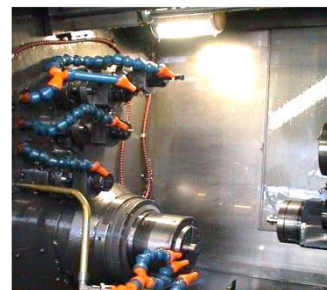


Multiple causes of fire:

- Combustion of oil residues and flammable metals
- Malfunction (coolant system ; tool breakage ; low maintenance)
- High friction (static electricity)
- Human behavior : operator error

Available extinguishing agent:

- CO2





FIREDETEC PRODUCT APPLICATIONS EXAMPLE

LABORATORY FUME HOOD

Multiple causes of fire:

- Ignition of chemical residues and vapors in the extractor
- Open flame (Bunsen burner) ; heating plates
- Volatile and reactive agents
- Human behavior: technician error

Available extinguishing agent:

- CO₂
- HFC-227 / NOVEC
- ABC dry chemical

Certifications:

- FM / UL approval for DOT cylinders (HFC-227 / NOVEC)





FIREDETEC PRODUCT APPLICATIONS EXAMPLE

COMMERCIAL KITCHEN

Multiple causes of fire:

- Grease
- Flammable oils
- Open flames/heat

Available extinguishing agent:

- F/K extinguishing agent

Certifications:

- LPCB



VEHICLE ENGINE



Multiple causes of fire:

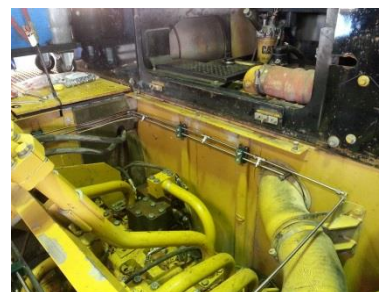
- Temperature of engine compartment
- Little maintenance time

Available extinguishing agent:

- TS-55 extinguishing agent
- BerkiCold

Certifications:

- SPCR 183





ROTAREX
FIRETEC
FIBETEC

FIREDETEC PRODUCT SPECIAL FEATURES

DIMES

Functioning:

Measurement of CO₂ contents

→ Capacitance difference between two electrodes.

→ Detection of changes in the mass of CO₂ (liquid and gas phases)



ADVANTAGES



- Real-time measurement
- Temperature compensation
- Very precise
- Reduced maintenance costs (Eliminates need to dismantle and weigh cylinders)
- Personal alarm level setting
- Multiple cylinder controlling
- Easy installation (system integrated into the valve body)
- Easy calibration



Note: only available with IHP Valves (B0702) and Electromagnetic valve (B0439)



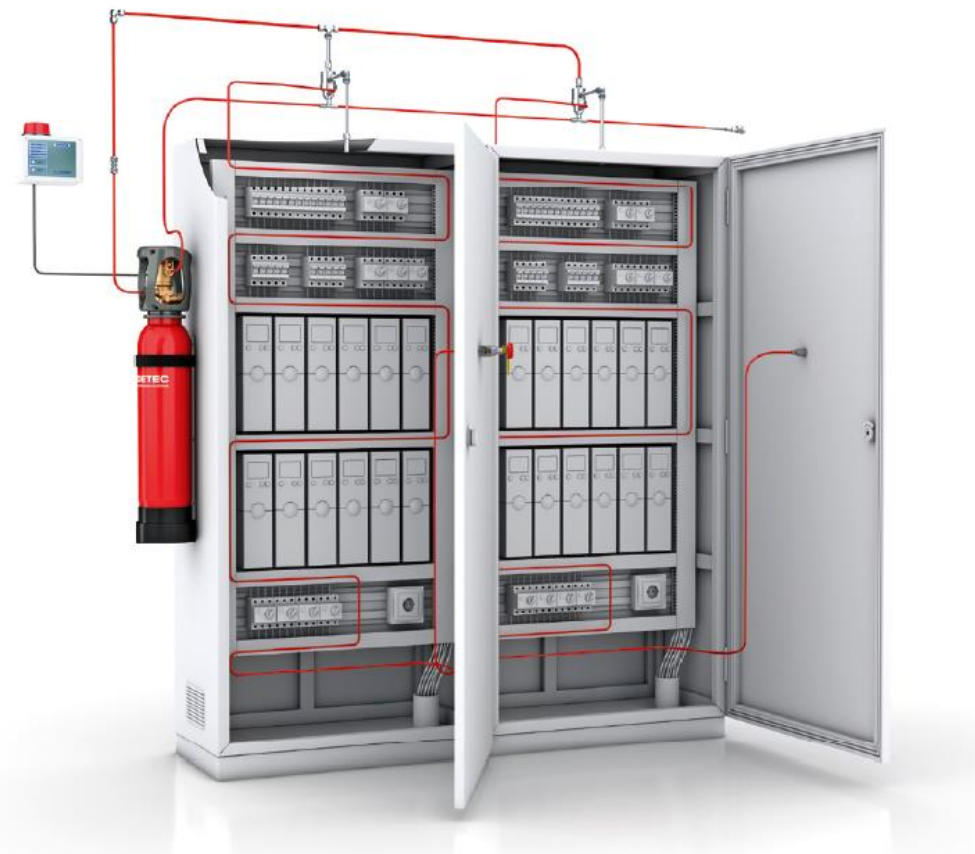
ROTAREX
FIRETEC
FIBETEC

FIREDETEC PRODUCT SPECIAL FEATURES

DIRECTIONAL VALVES

Advantages:

- Protection of several enclosures with only one cylinder
- Detection and discharge only in the zone with fire





ROTAREX
FIRETEC

THANK YOU FOR YOUR ATTENTION

